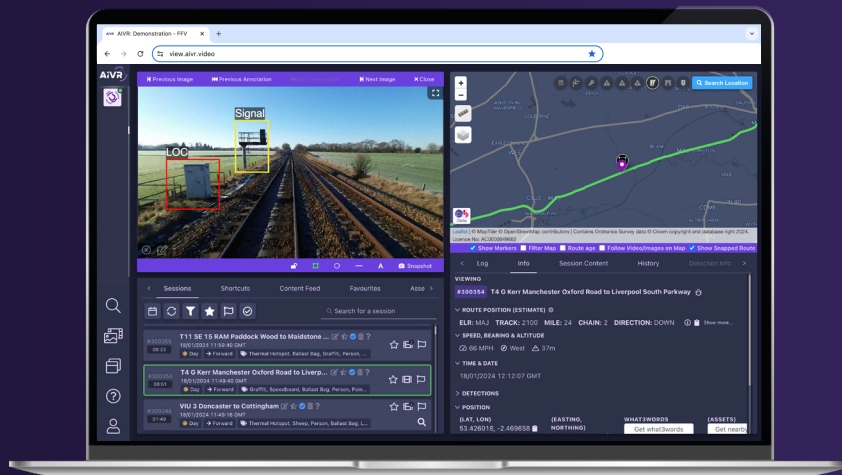


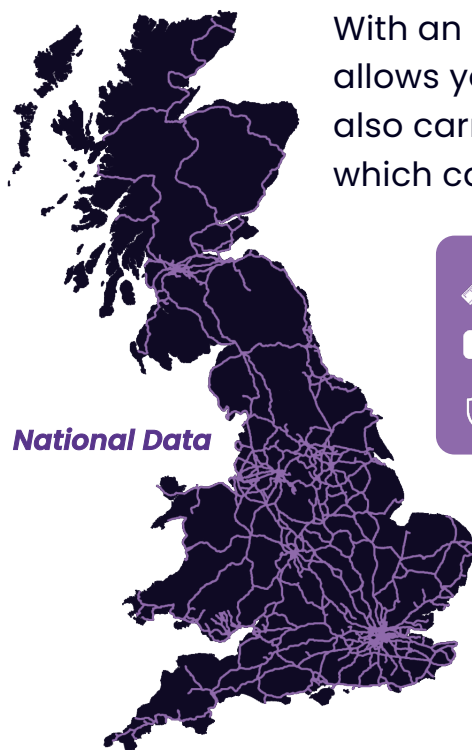
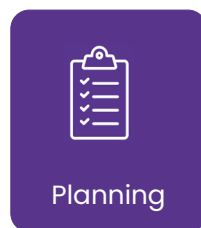
# AIVR<sup>®</sup> Platform

The multi-award-winning system that provides **Remote Infrastructure Monitoring, Survey, Inspection** and more.



## Automated Intelligent Video Review

The AIVR Platform hosts over **1,000,000 miles of national video data**, enabling experts from any rail discipline to monitor the lineside environment **remotely** and **safely**.



With an AIVR licence, you can securely access **digital tools** which allows you to **locate, measure, annotate** and analyse images whilst also carrying out **planning, sighting**, and **reporting** activities – which can be shared within and across teams and groups.



Measure



Advanced Sighting



Export data



Annotate



Create PDF Reports



Analyse

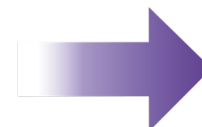


Review Safe Cess



View Route History

**And more!**



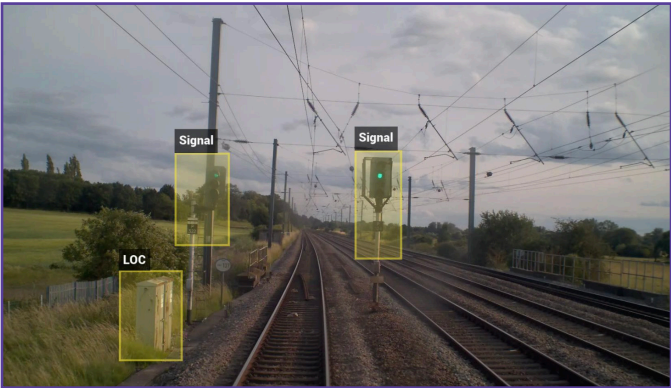
For each hour a user spends monitoring data on the AIVR Platform, it's estimated they **save an 8 hour** site visit or cab-ride.

## Get access to the AIVR Platform!

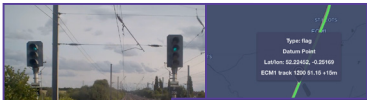
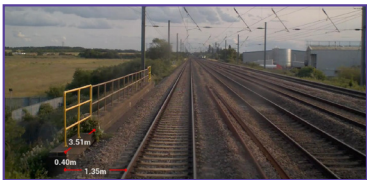
To enquire about licenses, or to book a demonstration of the AIVR Platform, email us on: [enquiries@onebigcircle.co.uk](mailto:enquiries@onebigcircle.co.uk)



**Annotation tools** allow points of interest to be clearly highlighted.



**Measurement Tools** can assist in signal & structure assessments, railway design and planning activities.



**DATUM**

551m from datum [Set Here](#) [Clear Datum](#)



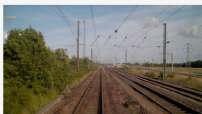



Current datum ELR: ECM1 TRACK: 1200 MILE: 51 CHAIN: 15 DIRECTION: UP

**Datum** allows you to measure longitudinally from point A to point B following the track.

**Advanced Sighting Reports** provide a convenient visual export of site data to aid signal sighting and planning activities.

Direction:  Sighting Increment:  Maximum Range:

Actual distances may differ slightly from expected increments due to speed of the moving device. The image shown is the closest available frame to the requested location.




[Close](#) [Create Report](#)

**Historical Rail Route Data** enables seasonal & project decisions to be delivered using data-driven comparisons. **Filter through** bearing, track ID and more to ensure you see the relevant data.


History

Bearing:  Day:  Video Direct:  Track ID:  Tags:  QA Fil:


Search for a session



T11 SE 8 RAM Maidstone West to Strood  
#309469  
20/02/2024 12:29:56 GMT  
Day Forward North 3101 Thermal FFV, Visible FFV



T11 SE 8 RAM Paddock Wood to Maidstone West  
#309453  
20/02/2024 12:21:16 GMT  
Day Forward North 3101 Thermal FFV, Visible FFV




T11 SE 8 RAM Maidstone West to Strood  
#308089  
15/02/2024 10:30:01 GMT  
Day Forward North 3101 Thermal FFV, Visible FFV


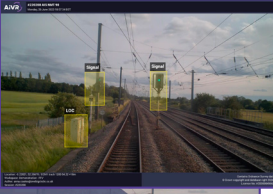
**Safe Cess Digital Overlay** can be applied to support planning and identification of trackside positions of safety.



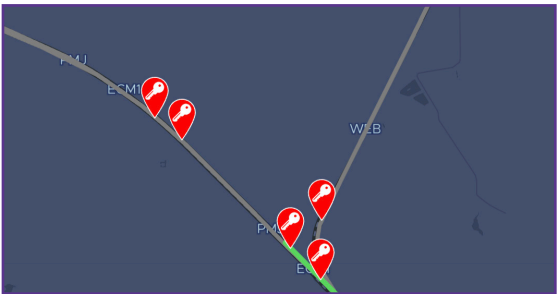
**Export** Video, Images, PDF Reports and more to share within teams to enhance collaborative working.



Site of Work  
anna.coates@onebigcircle.co.uk  
AIS NMT 90



**Locate & Integrate Asset Data** on the map such as access points and OHL structures.



**Search by** ELR Mile & Chain/Meterage/Yards, Latitude/Longitude, What3Words, Assets and Stations.

Find Location Assets Stations

\* Location Type:

\* ELR:

\* Mile:

\* Chain:

